

# Temple Herdewyke Primary School and Nursery

E mail: templeherdewyke@stowevalley.com

www.templeherdewykeprimary.co.uk



TEMPLE HERDEWYKE  
PRIMARY SCHOOL  
PART OF STOWE VALLEY MULTI-ACADEMY TRUST

Friday 12th November 2021

Tel: 01926 641316

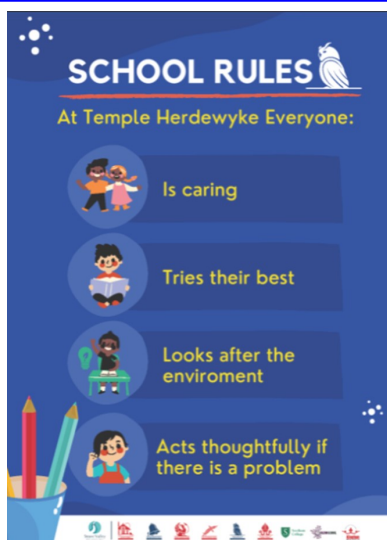
## Message From Headteacher

It came as a shock to everyone that Mrs Godfrey retired after a very successful 18 years at the school. I know she has made lots of plans and is enjoying holidays, theatre trips and walking in the countryside. Although my arrival here came suddenly (including to me) I cannot thank parents, staff and children enough for making me feel very welcome. The attitude of the staff to try new things out and their determination to do the best for the children is a particular strength. I also have enjoyed every moment I have spent with the children—and have already picked up they are passionate about their interests (football, the environment, hedgehogs, to name but a few.) and show they are eager to learn in lessons. At the moment I am here on an interim arrangement, currently just until Christmas, while Stowe Valley MAT and the Governors has time to make decisions about a more permanent arrangement. That said - we are committed to ensure that Temple Herdewyke has someone that parents, staff and children can go to. I have always tell children that it is the headteacher's job is to solve problems—so if there are any problems, please encourage children to tell someone at school or come and speak with me.

Please read this newsletter - I hope you tell you some of the adaptations staff have made since halfterm.

## New Rules and Certificates:

We launched new school rules at the beginning of this week. These have been changed because we are trying to build on an atmosphere where children feel cared for and care for one-another, and where children always try their best—even if something is challenging or tricky. I feel this is especially important after a couple of inconsistent years in schooling due to COVID.



## Lexplore Reading Tests.



Mrs Gilsh and Mrs Owens have used a new computer test for reading called Lexplore.

Lexplore tracks the child's eye movements as they read, measures reading fluency and gives teachers important information about a child's reading.

The test only takes 5 minutes—and the children all enjoyed reading 1:1 with an adult on the computer. It was great how it didn't feel like a test at all!

The results show that most children are very good at phonics—they are very good at sounding out words, and can work out what tricky words say. Children generally now need to increase the speed they read. This is only done with regular practice.

If you want to find out more about how the reading tests work—please see below where there is a video clip taken from the One show.

<https://youtu.be/4pocWBb2j-M>

## Reading Award:

We are also launching a reading Award. **Every child that reads 5 times at home, will get 5 dojos.** The year group with the most children who get their 5 reads will be awarded a trophy.

**Please try to read with your child 5 times a week - it is the most important way to support your child at home.**



**Breakfast Club—New Room** Next week, we will be trying Breakfast club in the nursery building. If your child comes to breakfast club, please can you come in the nursery gate on the side of the fence and take your child to the nursery 'hut' door. The side gate will be locked at 8:30 - so if you arrive after that time, please take your child to the front of the school. After school club will continue to be in the main school, but we may look at changing this in the coming weeks.

If your child is 2 and you are booking for breakfast or after school club—please try to give 24 hours notice so we can guarantee we have spaces—with less notice it becomes difficult to have the staffing ratios required.

### **Parent's evening**

Parent's evening will be on the week beginning 22nd November. While we have no COVID cases in school, we are hoping we can do this face-to-face, we do ask that you wear a facemask. If we get any cases within school, we may need to move to doing this over the telephone.

From Monday 15th November, there will be a sign-up sheet by the front entrance of the school to sign up for times.

Please see the letter attached for more information.

### **COVID**

Attached to this newsletter is a document called 'November—COVID outbreak contingency plan' this has been written so you can see what measures the school currently has in place, and what further measures we will put in place if we get any positive results within school. If we do have cases in any class, we will need to inform you as parents. At the moment, because of a number of cases in linked secondary schools, we are starting to put in measures from step 2.

### **Think, Explore, Decide Time.**

*Think Explore Decide Time*

Mr Hibbert has given your class £10 to spend on anything – as long as it makes a positive change.

In assembly on Thursday 11<sup>th</sup> November– your class will need to share how chose to spend your money and why.

This is a Moral Challenge:

- I investigate moral and ethical issues.
- I can offer reasoned views.

To be successful we need to:

**Evaluate** – you will need to decide what the biggest positive change is.

**Justify** – which means you give a good reason about your thoughts

Another new initiative launched at school this week was 'Think, Explore, Decide, Time.' Which is designed to have get children thinking about big moral/social/cultural questions, listening to other's views and explaining their views. The first challenge was how will they spend £10 to make a positive difference. This is what each class decided:

**Robins** - We will buy flowers and plants for the school, they make people feel happy and they are good for insects and animals.

**Kingfishers** - We will buy food for Warwickshire Hedgehog Hospital. We spoke to them this week and found out hedgehogs are being hurt in bonfires and road accidents and we want to help them.

**Parrots** - We are splitting our money in half - we will by one tree sapling for the school because it is good for nature and wildlife, and will buy a pack of things to give to a homeless shelter - like canned foot, a toothbrush and toothpaste.

**Falcons** - We are buying a bug hotel for the school - bugs have an important job to do and help the whole environment; they pollinate, provide food for birds and bats and they are interesting to learn about.

I was so impressed with the children's ideas, how they showed passion about making a difference and how articulately they spoke. I look forward to hearing their viewpoints in challenges in the next few weeks!